



2008 Annual Report



Richland County Children Services Board

Safe Children Today Build Strong Families Tomorrow

A Message from the Executive Director

2008 was a very busy year for the Agency. Our staff prepared endless hours for a site visit by the Council on Accreditation to ensure that the Agency is offering services based on national best practice standards.

In this report you will also find a feature on the passage of the Children Services Renewal Levy. I would like to thank our staff, Board members, and community for all the hard work that goes into putting on a levy campaign. The overwhelming support of the community enables the Agency to continue its mission of protecting children at risk of abuse, neglect, and dependency.

Our mission would not be possible without commitment of a dedicated staff, Board, foster, and adoptive parents. Throughout this report you will read about the unsung heroes of child welfare. These are the people in your community who work every day to preserve families and protect children.

Sincerely,

Randy J. Parker

Inside This Report

- Children Services Board Feature p.3
- Agency Activities & Public Awareness Events p.5
- Futty Training & Learning Center Hosts Regional Trainings p.6
- Richland County Boasts Angels in Adoption p.7
- Agency Trends & Financials p.8

Children Services Receives Second Reaccreditation



Richland County Children Services spent countless hours this past year preparing a self-study for a site visit by the Council on Accreditation (COA). This represents the Agency's second reaccreditation process.

The COA reaccreditation process involves a detailed review and analysis of both an organization's administrative operations and its service delivery practices. All are measured against national standards of best practice.

These standards emphasize services that are accessible, appropriate, culturally responsive, evidence based, outcomes-oriented, and fiscally responsible.

In addition, the Agency prepared for review of the following specialized service standards:

- Child and Family Development and Support Services
- Child Protective Services
- Kinship Care Services
- Foster Care Services
- Adoption Services

This monumental task could not have been accomplished without the commitment of the Agency staff and Board members.

Ohio has one of the highest rates of public agency accreditation for locally administered public children services agencies in the nation (only North Carolina has more).

Richland County Children Services is one of twenty-two public agencies in the State of Ohio accredited by COA.

Keeping Kids Safe

November 4, 2008 brought good news that the voters of Richland County overwhelmingly supported the Children Services Renewal Levy. With passage in 98 of 102 precincts and 59.42% percent of the vote, the community responded in favor of keeping kids safe.

Election Day capped off ten months of planning and campaigning by many dedicated individuals. The hard work of our levy committee and Agency staff showed in the sea of green that flowed down Park Avenue West during the Mansfield Halloween Parade.

It was our goal to be as visible as possible which included fluorescent green levy signs, billboards, bus decals, and the occasional child supporter's green hair.

Our staff and families affiliated with the Agency appeared in endless parades, community fairs, and family expos. We also made an effort to reach as many voters as possible through 70 speaking engagements in 60 days.

Our last task was to say Thank You to Richland County. If you saw us in green garb following election day on street corners holding Thank You signs, it was because we appreciate your support of Children Services.

The passage of the Renewal Levy will generate approximately \$1.7 million dollars in local tax revenue to provide services for the care, protection, and placement of children at risk of child abuse or neglect.



Cameron Barnett (left and middle with Pam and Al Barnett, foster/adopt parents) is one of eleven adoptions finalized during 2008. Cameron enjoys a caramel apple as one of 200 volunteers at the Mansfield Halloween Parade which serves as a backdrop for this article.



Diversity, Sensitivity, Direction, Strength, and Accomplishment

Q: What do a certified plumbing inspector, sports broadcaster, teacher, and metal manufacturer have in common?

A: They are all concerned about the safety and well-being of children in our community and they happen to serve together on the Richland County Children Services Board (RCCSB).

Nine individuals in total make up the Children Services Board in Richland County. In addition to the aforementioned the Agency is fortunate to have a pediatrician, human resources director, child welfare professional, library director/adoptive parent, and a school administrator as serving members.

Diversity

The diversity of the Board not to mention its wealth of knowledge is what makes it special.

Consider the perspective that a manufacturer brings to the table. Providing goods and services to consumers carries with it a certain amount of stress. In a good economy there may be the pressure to keep up with customer demand, and in economic drought families are left with the possibility of layoffs or job loss.

Jon Bell, RCCSB Secretary explains the balancing act that many working class families face, "In today's 'just-in-time' operations the system is even less accommodating to the competing pressures of family needs and job requirements. Being aware of these conflicting demands and of some possible alternatives to their resolution is an attribute which is difficult if you haven't been there."

Each member of the Richland County Children Services Board has a unique perspective of the social forces that are at play that affect service delivery.

"Richland County Children Services continues to recognize this and to provide not just the services that are required to keep kids safe but also those services that show children how to become capable, caring adults who can raise their own children without abuse and/or neglect," Bell said.

Sensitivity

Every day children in Richland County attend public and private schools to develop their minds. But it is important know that a school teacher's responsibility does not end there. Fifty-five percent of child abuse and neglect referrals were made by **mandated reporters** (teachers, counselors, medical personnel, law enforcement, etc.).

Teachers are often the first to observe and report signs of child abuse and neglect. With this being the case it is invaluable to have a Board member to represent the emotional and educational needs of children in our community.

Jan Castor has 36 years of experience in the classroom. She brings to the Board the compassion she has for her students,

"I've felt sadness when working with children whose disabilities were the result of severe neglect or abuse. I have also felt the relief of finally getting help for a child who is suffering. I have felt joy when a child experiences success that belies his background. I felt gratitude for case workers who helped and foster parents or adoptive parents who have provided love," Castor said.

Direction & Strength

Two of the most important characteristics of the Board are direction and strength.

Nancy Joyce has reported countless stories about winning teams throughout her career as a sports broadcaster. As RCCSB Chair, she demonstrates strong leadership with the ability to communicate effectively.

Nancy explains that the Agency's success stems from a strong relationship with the administration and staff, "I have great respect for Randy Parker and his administrative team. Their expertise and professionalism never wavers in the face of often very trying situations. They have the proper tools to protect children and pass their knowledge on to their staff to enhance their ability as well."

Accomplishment

The final characteristic of a successful Board is to share a sense of accomplishment.

Dean Wells is a certified plumbing inspector covering Richland County. He also serves on the Richland County Fair Board.

Dean describes what is at the heart of Children Services, "Working to keep families together and educate parents was a true surprise and made me proud to be on the Children Services Board."

It is also an accomplishment when a child despite difficult circumstances has a family to call his/her own.

"The Agency promotes Foster Parenting and Adoption to an unbelievable level. This community is and should be very proud of these accomplishments."

Honoring Employees by Recognizing Outstanding and Exemplary Service

Each quarter Agency staff have the opportunity to nominate their colleagues for going above and beyond the call of duty. We call this distinction the H.E.R.O.E.S. Award given at monthly staff meetings.

The following are our H.E.R.O.E.S. for 2008 in the categories of support staff, social worker, and supervisor:

1st Quarter

- Heather Petty, Support Specialist
- Charity Hamler, Social Worker (Protective Supervision Order Unit)
- Kevin Wharton, Supervisor (Court Liaison Unit)

2nd Quarter

- Tracy Bly, Executive Secretary



- Holly Hartman, Social Worker (Intake Unit)
- Lori Feeney, Supervisor (Ongoing Unit)

- Pamela Varnes, MIS Administrator

3rd Quarter

- Sarah Bradley, Support Specialist
- Amanda Campbell, Social Worker (Placement Unit)

4th Quarter

- Ruth Baumberger, Paralegal
- Tiffany Sommers, Social Worker (Ongoing Unit)
- Edith Gilliland, Agency Attorney

Agency Staff

Gina Bandy
Scott Basilone
Ruth Baumberger
Carol Baxter
Brandi Berry
Tracy Bly
Deborah Bowling
Sarah Bradley
Brooks M. Brooks
Jodie Brown
Beth Burns
Dawn Butterman
Elleena Cameron
Amanda Campbell
Billie Chester
Marsha Coleman
Teresa Coll
Amanda Davis
Cheri Denney
Courtney Dunlap-Knoll
Jeanetta Elia
Nidhi Elia

Phil Farley
Lori Feeney
Kimberly Ford
Nicole Foulks
Noah Fraley
Kristin Galownia
Wanda Garrick
Edith Gilliland
Carla Glover
Kevin Goshe
Vickie Graves
Sharon Gray
David Hackedorn
Joe Hamilton
Charity Hamler
Nikki Harless
Tim Harless
Holly Hartman
Shane Hedrick
Heather Higgins
Elizabeth Hollar
Stephanie Hughes

Alison Hustack
Christina Jackson
Darrick Jackson
Jennifer Jacocks
Paula Johnson
Sylvia Jordan
Gregory Kahl
Mark Keck
Patricia Kever
Brianna Kindinger
Tara Lautzenhiser
Michelle Lehman
Amy Logan
Jennifer Long
Jennifer Lovra
Patrick Ludwick
Megan Mahoney
Patricia Markley
Jennifer Marsh
Rhonda Massey
Ruth Maurer
Robyn May

Michael Mayer
Trevor Megoloff
Drew Miller
Joycelynn Moree
Cynthia Myers
Tanna Neal
Audrey Ousley
Randy J. Parker
Luann Payne
Heather Petty
Paul Pfeifer
Angie Poth
LaShaun Reuer
Carol Rissler
Elayna Rizor
Angelica Sams
Katherine Schiraldi
Carol Sgambellone
Terrie Sgro
Staci Shaw
Carol Smith
Dusty Smith

Tiffany Sommers
Peter Stefaniuk
Michele Stiggle
Shawn Strong
Michelle Sutton
Heather Swanson
Kelly Thayer
Melissa Tucker
Catherine Van Riper
Kelley VanGilder
Pamela Varnes
Rachel Wappner
Sandra Watrous
Kevin Wharton
Carla Wilkinson

Celebrating Milestones

- Deborah Bowling, 20 years
- Elizabeth Hollar, 15 years
- Cynthia Myers, 15 years
- LaShaun Reuer, 10 years
- Sarah Bradley, 5 years
- Kevin Goshe, 5 years
- Joycelynn Moree, 5 years
- Dusty Smith, 5 years
- Kevin Wharton, 5 years



Coach Ron Schaub — 2008 Prevent Child Abuse Ohio Outstanding Volunteer of the Year

Coach Ron Schaub has touched the lives of almost 230 children over the past three years by teaching them the lifelong sport of tennis. These are children ages six to eighteen who are in foster care, have been recently adopted, or are living with kinship providers (grandparents, relatives, or close family friends).

Ron shows a natural gift of teaching and has an amazing way of generating excitement that brings smiles to children's faces.

The Agency is able to provide "Rally for the Kids" through corporate donations, but we could not do it without the commitment of Mr. Schaub and Lakewood Racquet Club.



Children Services, Ohio Dreams, and CD Jungle Get Stoked at Lex Blueberry Fest

"Ollie?" Don't know what one is? Children Services teamed up with some local skate pros and kids to find out.

Richland County Children Services has been a part of the Lexington Blueberry Festival the past two years. We were excited to take over the Lexington Skate Park for a couple of hours to host our first try at a skateboarding competition.

It has been part of our marketing plan to provide healthy activities for kids while educating the public on programs and services offered by the Agency.

If you received free popcorn this past summer at a fair, it was most likely from us. We look forward to sharing in some fun with you again this year.



Four Communities Embrace Pinwheels for Prevention Display

2,169 pinwheels twirled in the wind in the Village of Bellville, Abraxas Ohio, City of Ontario, and the Ocie Hill Neighborhood Center as part of Child Abuse Prevention Month.

The "pinwheel" has become synonymous with the number of reported cases of child abuse and neglect in Richland County. Each pinwheel represents a concerned citizen or mandated reporter who placed a call to child protective services; a family receiving supportive services from a network of agencies; and the safety and well-being of a child or sibling group.

Richland County Children Services has been the lead agency for the pinwheels display since 2006. If you have a high traffic location and would like to be a site for next year's display, please contact Richland County Children Services at 419-774-4100.



Training and Learning Center Providing Educational Needs for the Agency and Community At-Large

The Gerald F. Fuddy Training and Learning Center hosted a wide range of training sessions throughout 2008.

Perhaps one of the most notable facts was that the facility was certified by the Central Ohio Regional Training Center (CORTC) in Columbus as a regional site for CORE trainings.

Staff from Richland County no longer have to make the 140 mile round trip to Franklin County, saving worker productivity and transportation costs.

The Agency hosted 61 foster/adoption sessions for new and recertified foster families as well as 20 various other trainings including:

- Teen Screen
- Behavioral Health Care
- Attorney Training provided by the National Center for Adoption Law and Policy
- Statewide Automated Child Welfare Information System (SACWIS)
- Safe Haven Law
- Developing the Child Welfare Team
- Self Defense for Social Workers
- Ethics
- Domestic Violence Shelter
- Domestic Violence Shelter — CORTC
- Comprehensive Assessment Planning Model Interim Solution — CORTC
- Blood-borne Pathogens

The 2,535 square foot training center offers full audio video capabilities with tele/videoconferencing features.

The TLC has a secure, separate entrance to the



Dr. Mark Redding, primary care pediatrician for Mansfield Pediatrics, presents at the Safe Haven Training held on July 24, 2008. The event was attended by individuals representing law enforcement, fire/rescue, health care professionals, education, social services agencies, and child welfare.

building and has its own rest room facilities and vending machines.

If your agency, service group, or business is interested in holding an event at Children Services, please call Carol Rissler, Supervisor of Administrative Services at 419-774-0305.



Update: Ohio's Safe Haven Law

SB 304 was signed by Governor Ted Strickland on December 23, 2008. There are two main provisions to the law:

- 1.** It allows a birth parent to leave an unharmed newborn **less than 30 days old** with: a medical worker in a hospital; peace officer at a law enforcement agency; or a medical worker at a fire department or other emergency service organization.
- 2.** The law also requires the development of an education plan that will be modeled after a training developed by Richland County Children Services, Family Life Counseling and Psychiatric Services, Mansfield Pediatrics, and Richland Pediatrics.

Angels in Adoption

November is National Adoption Month, and our nation's theme is "Answering the Call: You don't have to be perfect to be a perfect parent." During the month of November, we recognize the special people who open their hearts and homes to a child or sibling group in need of a forever family.

This past year was special because a local family was recognized on a national stage as being Angels in Adoption™.

Senator George V. Voinovich nominated Merle and Sue Wentz as 2008 Angels in Adoption™ for their commitment to providing a permanent home for two children despite difficult circumstances.

The Congressional Coalition on Adoption Institute (CCAI), which orchestrates the Angels in



Senator Hillary Rodham Clinton presents at the Ronald Reagan Building and International Trade Center in Washington, D.C. The Wentz's trip was provided by the Fran and Warren Rupp Foundation.

Adoption™ program, honored Merle and Sue, along with more than 180 Angels, at an awards ceremony and gala event in Washington, D.C. this past September.

The Wentz's commitment to the care of these children embodies the spirit of all Richland County Children Services' adoptive families.

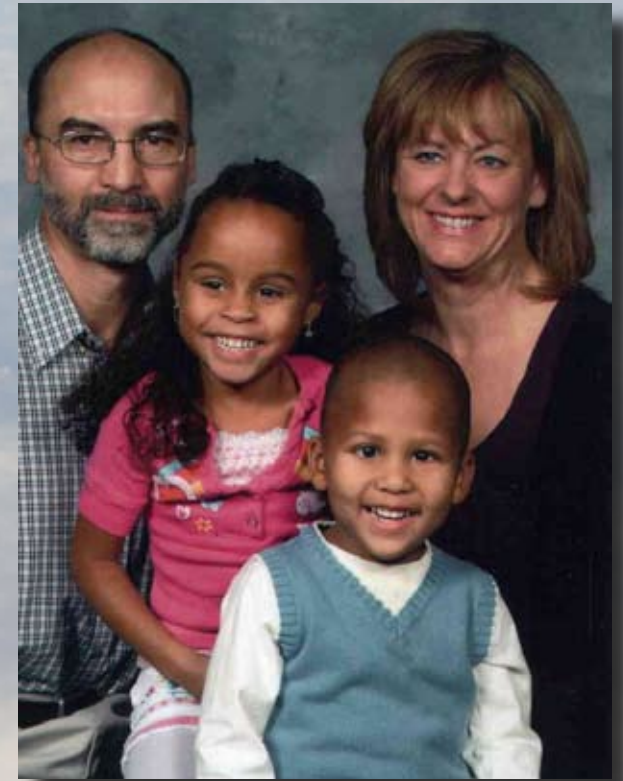
The Angels in Adoption™ program is CCAI's signature public awareness campaign and provides an opportunity for members of the U.S. Congress to honor the good work of their constituents who have enriched the lives of foster children and orphans in the United States and abroad.

Deciding to become a foster-to-adopt parent is one of the most important decisions one can make. Parents are a child's first teachers; they teach the fundamentals of life, love, and learning.

Richland County Children Services is proud to report that the agency has finalized eleven adoptions throughout the course of 2008. Over the past five years, Children Services has provided permanent homes to 74 children.

These are children who entered the child welfare system through no fault of their own, as victims of child abuse, neglect, or abandonment and are waiting for someone to make a difference in their lives.

If you are interested in becoming a foster-to-adopt parent, please contact Richland County Children Services at 419-774-4100.



The Wentz family: Merle, Sue, Briana, and Bryce.

Foster Parent Requirements

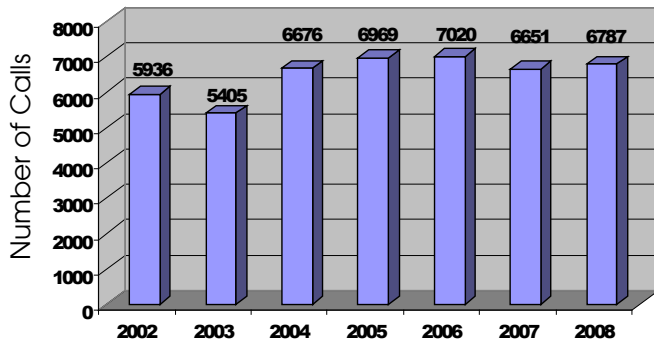
- **21 years of age**
- **Financially stable**
- **Agree to a health check-up**
- **39 hours of foster/adopt pre-service training**
- **Home study**
- **Complete a criminal record check**
- **Fire inspection**
- **Well check**

2008 Revenue and Expenditures

Revenue		
Federal Funds	\$4,406,879	49.41%
State Funds	\$925,810	10.38%
Local Levy Funds	\$3,241,962	36.35%
Parental Support	\$3,557	0.04%
Other	\$341,134	3.82%
TOTAL	\$8,919,342	100%

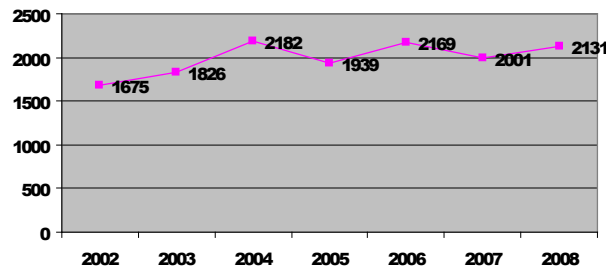
Expenses	
Personnel	\$5,334,712
Placement Services	\$1,155,261
Adoption Services	\$453,281
Purchased Services	\$492,767
Administrative Support	\$742,146
TOTAL	\$8,178,167
12/31/08 Resources Available	\$5,167,340

Screening Statistics



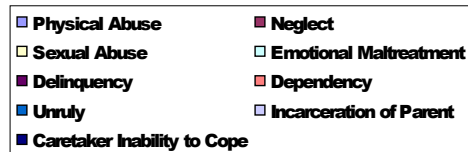
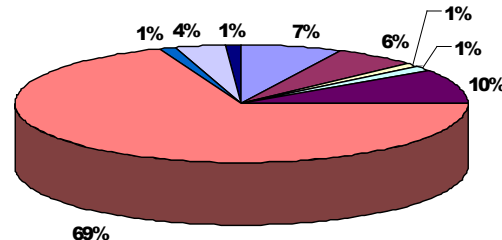
Our screening department received 6,787 calls during 2008. On average the Agency receives 19 calls per day resulting in 6 reports of child abuse and neglect each day.

Number of Investigations



Over the past six years, Richland County Children Services has averaged 2,000 referrals of child abuse and neglect. 55% of child abuse and neglect referrals were placed by mandated reporters (teachers, counselors, medical personnel, law enforcement, clergy).

Reasons for Placement



This graph depicts the reasons for out-of-home placements of children in Richland County.

“Dependent child” means any child who is homeless or destitute or without adequate parental care by reason of mental or physical condition of the child’s parents, guardian, or custodian; or whose condition or environment is such as to warrant the state, in the interests of the child, to assume the child’s guardianship.

Report Child Abuse and Neglect

Call 419.774.4100

24 hours, 7 days a week

www.RichlandCountyChildrenServices.org

Executive Director

Randy J. Parker

Board Members

Nancy Joyce, Chair

Carol Payton, Vice Chair

Jon Bell, Secretary

Joe Palmer, Treasurer

Ivy L. Amos

Jan Castor

Connie Hoffman, MSW

Colleen J. McKinney, M.D.

Dean Wells

Administrative Staff

Nikki Harless, MSW, LSW, *Director of Operations*

Marsha Coleman, MSW, LISW, *Clinical Director*

Kevin Goshe, MBA, *Director of Finance*

Tim Harless, MSW, *Program Director External Affairs*

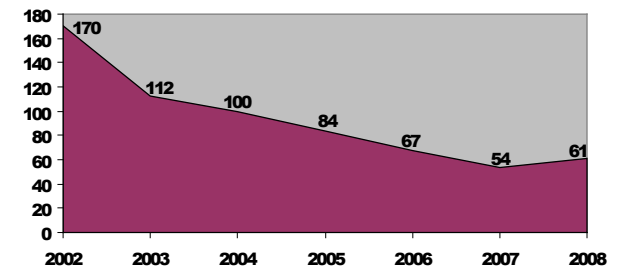
Elayna Rizer, JD, *Human Resources Manager*

Katherine Schiraldi, MSCJ, *Intake Pgm. Supervisor*

Scott Basilone, BS, *Ongoing Pgm. Supervisor*

Lori Feeney, BSW, *Placement Pgm. Supervisor*

End of Year Placements



This graph represents the number of children in out-of-home placements at the end of the year.



Richland County
Children Services

Richland County Children Services Board

731 Scholl Road — Mansfield, Ohio 44907

Phone: 419.774.4100

Fax: 419.774.4114

www.richlandcountychildrenservices.org